

Memo



Date: May 19, 2010

File: 1340-10

To: City Manager

From: Terry Barton, Manager, Parks and Public Places

Subject: New Off-leash Dog Parks

Report Prepared by: Mark Tompkins, Parks & Community Relations Coordinator

Recommendation:

THAT Council receive, for information, the report of Manager, Parks and Public Places dated May 19, 2010 with respect to new off-leash dog parks and new on-leash dog parks;

AND THAT Council amend Policy No. 258, Dog Walking and Dog Off-Leash Parks, as attached to Schedule "A" in the Report of the Manager, Parks & Public Places dated May 19, 2010.

Purpose:

To amend the Dog Walking and Dog Off-Leash Policy No. 258 by updating the list of designated on-leash and off-leash dog parks within the City of Kelowna, based on the results of off-leash trials, and on the suitability of recently constructed parks and in anticipation of the parks under construction in 2010.

Background:

There is a high demand in Kelowna for dog facilities in public parkland as the community continues to grow and the popularity of dogs in public spaces continues to rise. There are 128 parks and civic properties in Kelowna currently designated as on-leash dog parks, 6 parks designated as permanent off-leash dog parks, and 3 parks designated as temporary off-leash dog parks.

The provision of dog facilities, both designated on-leash trails and off-leash dog parks needs to be carefully considered in order to minimize potential conflicts with other park activities. Public consultation is a key tool to ensure local residents support such facilities. This report provides recommendations in order to expand dog facilities throughout the City.

Park Services has conducted two (2) off-leash park trials over past two years: i) Knox Mountain Park and ii) the former KSS Site and provides the following recommendations:

Knox Mountain Park - (Permanent) Off-leash Dog Park

An on-line survey conducted by the City of Kelowna received 400 responses of which ninety per cent (90%) of respondents supported the designation of an off-leash area in Knox Mountain Park. A fenced-off area was constructed in June 2009 and has operated on a trial basis to the

g✓

present date. The trial period has proven successful; therefore, staff recommend that the Knox Mountain Park off-leash dog park be designated as a permanent off-leash dog park.

Former KSS site - (Temporary) Off-Leash Dog Park

The former KSS site which is City owned (also known as Central Green) is currently undeveloped. Prior to development of the site, portions of the property are used on a temporary basis to fulfill various civic needs. As development is not expected to occur over the next two years Parks Services has used a portion of the site on a trial basis as an off-leash dog park since July 2009. This includes a separate area for small dogs. This trial period has proven successful; therefore, Park Services recommends that the City of Kelowna continue using this area as a temporary off-leash park until February 2012.

Infrastructure Planning and Design & Construction have developed several parks over the past year and several more will be constructed in 2010. New on-leash dog trails have been incorporated into these new parks with the following guidelines:

- i. A trail must go through the park.
- ii. Dogs should be separated from children's playground equipment/area.
- iii. Dogs must be on a leash no longer than 2 meters or 6 feet in length.
- iv. Signs need to be placed in the parks to make the general public aware that dogs are permissible on the trails.

The list of proposed designated On-leash Dog Parks is as follows:

1. Priest Creek Linear Park - 315 Balldock Rd
2. Black Mountain Recreation Corridor - 1200 Black Mountain Drive
3. Gerstmar Park - 955 Gerstmar Road
4. Birkdale Park - 363 Prestwick Street
5. Lund Park - 1250 Lund Road
6. Terrace Hill Park - 180 Terrace Hill Place
7. Hidden Lake Park - 1188 Long Ridge Drive
8. Still Pond Park - 550 Still Pond Place
9. Mugford Park - 425 Stetson Street
10. Quilchena Park - 347 Quilchena Drive
11. Southwest Mission Powerline Park - all sections

Southwest Mission Powerline Park

As part of the design process for the new extension of Powerline Park between Seon Cr and Killdeer Rd a public consultation process was conducted in order to receive feedback on the proposed dog off-leash area in the park. Infrastructure Planning hosted an Open House on Tuesday, February 25, 2010 at Chute Lake Elementary School. Comment forms were completed by 52 residents. Thirty-three (63%) respondents agreed with the location and size of the proposed dog park, while 17 (33%) opposed the off-leash dog park most commonly citing potential reduction in house resale values and conflict with adjacent neighbours regarding children, odor and noise from barking. Additional consultation with FortisBC revealed their opposition to the proposed off-leash dog park because it encourages people to congregate underneath high voltage powerlines. Based on these comments, staff have finalized the design for the park to remove the off-leash dog park and provide a designated on-leash dog trail. Staff recommends that all phases of the South Mission Powerline Linear Park be designated for on-leash dog trails.

Future Dog Facilities

Infrastructure Planning will continue to explore opportunities to provide appropriate dog facilities in other locations throughout the community including the downtown and central areas of the City.

Internal Circulation:

- A. Dixon, Bylaw Enforcement Supervisor
- S. Fleming, City Clerk
- I. Wilson, Manager, Park Services
- A. Gibbs, Manager, Design and Construction Services

Existing Policy:

Council Policy No. 258 Dog Walking and Dog Off-Leash Parks

Financial/Budgetary Considerations:

The infrastructure for the new dog facilities including the maintenance costs has been accounted for within existing and/or approved budgets.

External Agency/Public Comments:

The Regional Dog Advisory Committee supports the addition of more designated on-leash dog trails and off-leash dog parks.

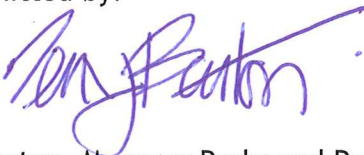
Legal/Statutory Authority

Parks and Public Spaces Bylaw No. 6819-91

Considerations not applicable to this report:

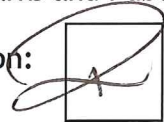
- Communications Considerations
- Personnel Implications
- Legal/statutory Procedural Requirements
- Alternate Recommendation
- Technical Requirements

Submitted by:



T. Barton, Manager Parks and Public Places

Approved for inclusion:



R. Cleveland, Director, Infrastructure Planning

- CC: C. Stephens, Director, Community & Media Relations
R. Cleveland, Director, Infrastructure Planning
S. Fleming, City Clerk
J. Creron, Director, Civic Operations
B. Berry, Director, Design & Construction Services



City of Kelowna
1435 Water Street
Kelowna, BC V1Y 1J4
250 469-8500
kelowna.ca

Council Policy

Dog Walking and Dog Off-Leash Parks

APPROVED July 26, 1988

RESOLUTION: R375/10/04/26
REPLACING: R096/09/02/02; R327/08/04/07, R1008/06/11/06; R633/06/06/26; R360/06/04/24; R1106/05/11/14; R529/05/05/30; R520/03/06/09;
R354/00/04/17; R530/99/06/21; R489/98/06/22; Policy #47 - R1111/88/07/26
DATE OF LAST REVIEW: April 2010

A. ON-LEASH

The following parks are identified as **dog walking parks** within which dogs on leash are permitted on trails, sidewalks, walkways and roadways in the park. Pathways and trails through children's playgrounds are excluded.

- Anchor Park 1691 Ellis Street
- Belmont Park 4444 Belmont Road
- Ben Lee Park 900 Houghton Road
- Birkdale Park 363 Prestwick Street
- Black Mountain Recreation Corridor 1200 Black Mountain Drive
- Blair Pond Park 333 Clifton Road South
- Brants Creek Linear Park Glenmore Valley
- Calmels Park 1059 Calmels Crescent
- Cameron Park 2345 Richter Street
- Canyon Falls Park 1856 Canyon Falls Court
- Carney Park 1890 Capistrano Drive
- Chichester Wetland Park 250 Sumac Road West
- City Hall 1435 Water Street
- City Park 1600 Abbott Street
- Crawford Bridle Paths Linear Park Crawford Estates Subdivision
- Davie Park 300 Davie Road
- Dilworth Mountain Park and trails 2100 Chilcotin Court
- Duggan Park 1494 Bernard Avenue – *See Map*
- Enterprise Way Park 2500 Enterprise Way
- Fairhall Park 2448 Fairhall Road
- Fascieux Creek Park Richter Street and Casorso Road – *See Map*
- Gerstmar Park 955 Gerstmar Road
- Gopher Creek Linear Park 1723 Lynrick Road
- Harris Park 280 Sumac Road W.
- Havard Road Linear Park 4538 Gaspardone Road
- Hidden Lake Park 1188 Long Ridge Drive
- Jack Robertson Park 1655 Willow Crescent
- Jewel Park 327 Providence Avenue
- Kerry Park 1480 Mill Street
- KLO Creek Regional Park 3730 Field Road
- Knowles Park 865 Bernard Avenue & 888 Lawrence Avenue
- Knox Mountain Park 540 Broadway Avenue
- Leckie Place (Brents Mill site) 2135 Leckie Place
- Lund Park 1250 Lund Road
- Main Street Park (Kettle Valley) 411 Providence Ave
- McCarren Park 347 McCarren Ave
- Mill Creek Linear Park Mill Creek (portions where there is a trail)
- Mission Creek Greenway From Lakeshore/Truswell to Ziprick Road
- Mission Creek Regional Park 2345 Springfield Road
- Millbridge Park 1999 Bowes Street
- Mission Recreation Park 3975 Gordon Drive
- Mission Ridge Park End of Bullock Road – *See Map*
- Moraine Park 700 Moraine Court
- Mugford Park 425 Stetson Street
- Pacific Court Park 1955 Pacific Court

A. ON-LEASH (CON'T)

- | | |
|--|----------------------------------|
| • Parkinson Recreation Park | 1800 Parkinson Way |
| • Powerline Linear Park | 5056 Windsong Crescent |
| • Priest Creek Linear Park | 315 Balldock Road |
| • Providence Park | 352 McCarren Ave |
| • Quail Ridge Linear Park | 2500 Quail Place |
| • Quarry Park | 640 Southridge Drive |
| • Quilchena Park | 347 Quilchena Drive |
| • Redlich Park | 1646 Gillard Drive |
| • Roxby Centennial Park | 250 Highway 33 West |
| • Rutland Lions Park | 205 Gray Road – <i>See Map</i> |
| • Rutland Sportsfields | 425 Hartman Road |
| • Scenic Canyon Regional Park | 3801 Field Road |
| • Still Pond Park | 1198 Long Ridge Drive |
| • Stuart Park | 1420 Water Street |
| • Selkirk Park | 2500 Selkirk Drive |
| • South Kelowna Centennial Park | 4194 Spiers Road |
| • Southridge Park and Open Space | 5045 Southridge Drive |
| • Southwest Mission Powerline Park | All Sections – <i>See Map</i> |
| • Summerside Park | 3858 Summerside Drive |
| • Sunset Drive Park | 1055 Sunset Drive |
| • Still Pond Park | 550 Still Pond Place |
| • Stuart Park | 1420 Water Street |
| • Terrace Hill Park | 180 Terrace Hill Place |
| • Thomson Creek Linear Park | 4105 Gordon Drive |
| • Tulameen Park | 347 Quilchena Drive |
| • Waste Water Treatment Plant | 951 Raymer Road – <i>See Map</i> |
| • Wilson Creek Linear Creek | 4186 Lakeshore Road |
| • Winslow Park | 5386 Winslow Street |
| • Wyndham Neighbourhood Park | 131 Wyndham Court |
| • Waterfront Park | 1200 Water Street |
| • Including the waterfront promenade between City Park and Sunset Drive (Note: This does not include the boardwalks and trails of Rotary Marsh). | |

NOTE: Dogs are NO LONGER PERMITTED within Sutherland Bay Park

B. OFF-LEASH:

The following parks are designated as dog off-leash parks within which dogs are permitted to run at large while under the control of a person capable of controlling the dog at all times:

- | | |
|---------------------------------|---|
| • Cedar Creek Park | 5200 Lakeshore Road – See Map |
| • Duggan Park (SMALL dogs only) | 1494 Bernard Ave – See Map |
| • Ellison Fields | 4680 Old Vernon Road – See Map |
| • Enterprise Way Park | 2500 Enterprise Way |
| • Glenmore Road North Dog Park | 2150 Glenmore Road North - See Map |
| • Knox Mountain Park | 450 Knox Mountain Drive – See Map |
| • Mission Recreation Park | West of the Mission Greenway parking lot and East of Michael Brook Wetland. 3975 Gordon Drive |

The following parks are designated as TEMPORARY dog off-leash parks within which dogs are permitted to run at large while under the control of a person capable of controlling the dog at all times:

- | | |
|--|---------------------------|
| • Kelowna Secondary School site (April 15/09 – Feb/12) | 1079 Raymer Ave – See Map |
| • Rutland Recreation Park | 375 Harman Road – See Map |

REASON FOR POLICY

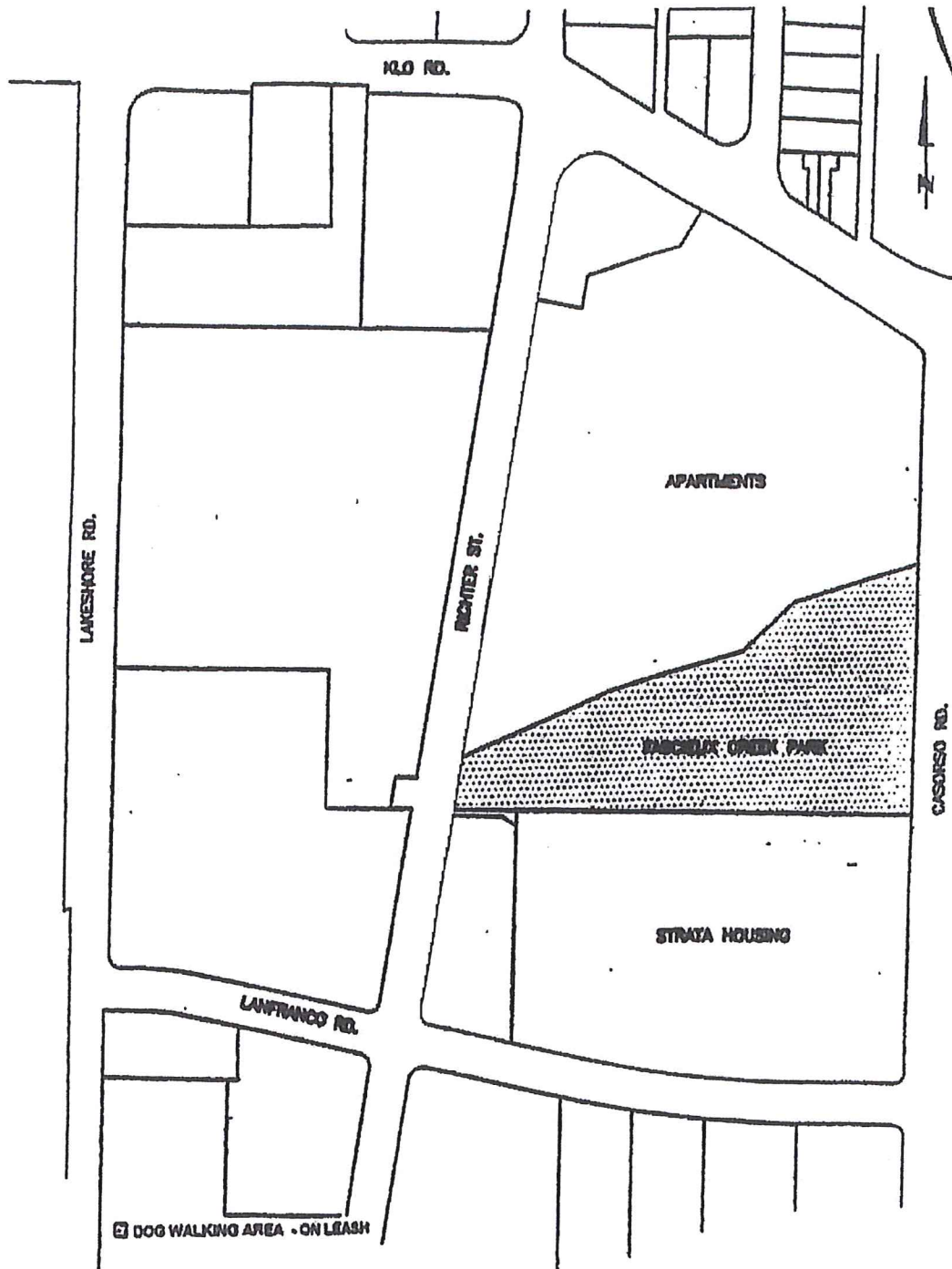
To identify parks where owners may walk their dogs.

LEGISLATIVE AUTHORITY

Parks Regulation Bylaw No. 6819-91.

PROCEDURE FOR IMPLEMENTATION

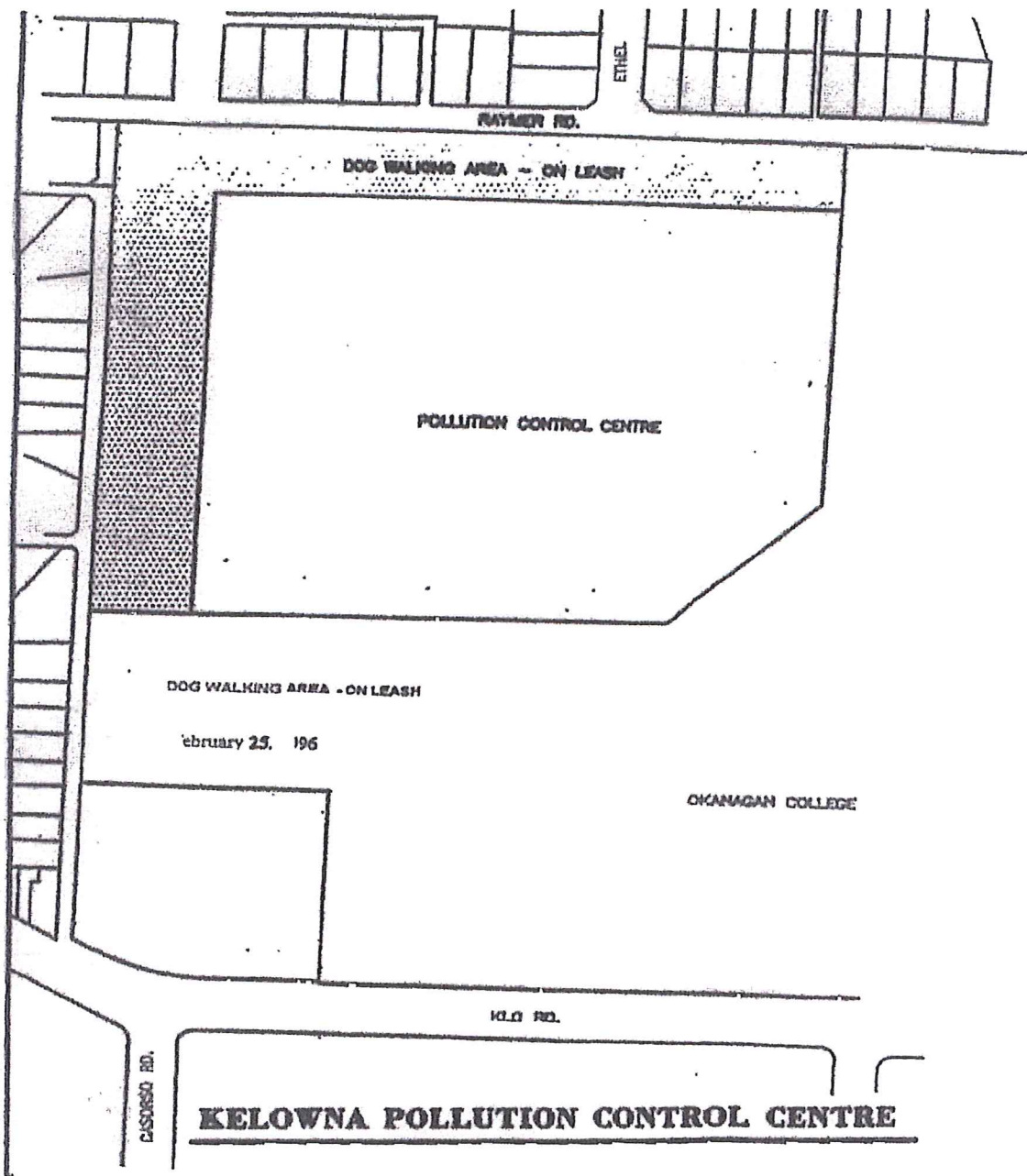
Amendments to this policy are through the Parks Services Branch of the Civic Operations Department.



February 25, 1996

FASCIEUX CREEK PARK

SCALE - 1:2500



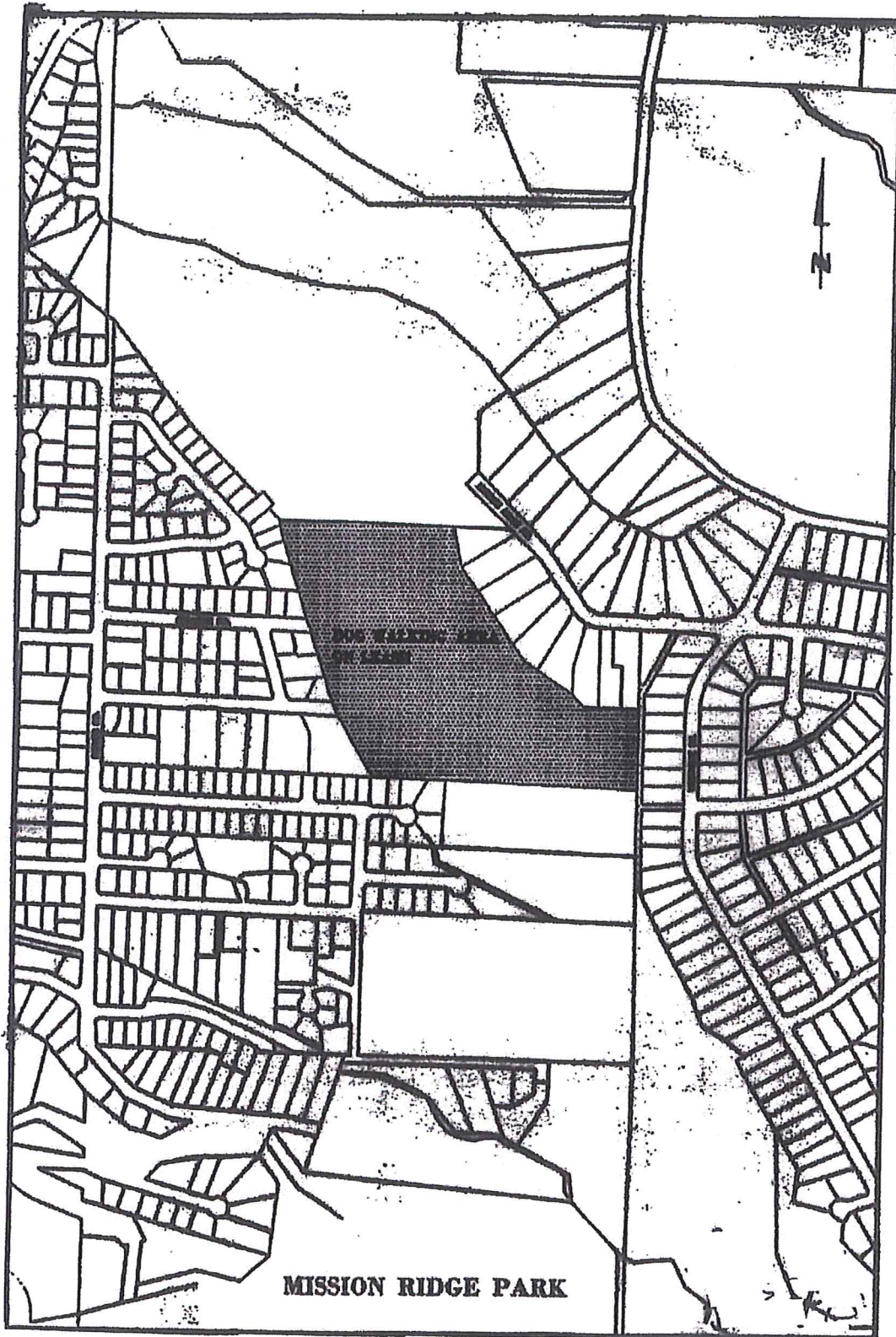


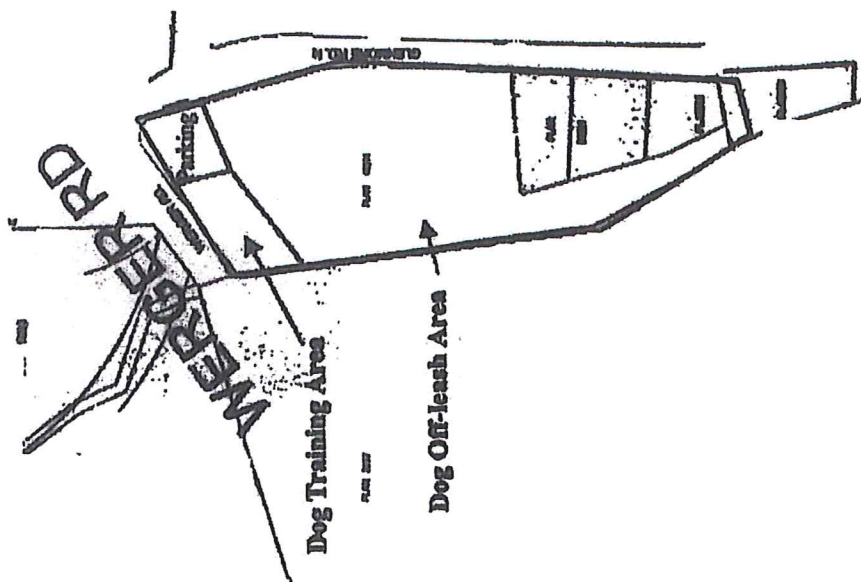
DOG WALKING AREA - ON LEASH

February 25, 1996

LIONS PARK (RUTLAND)

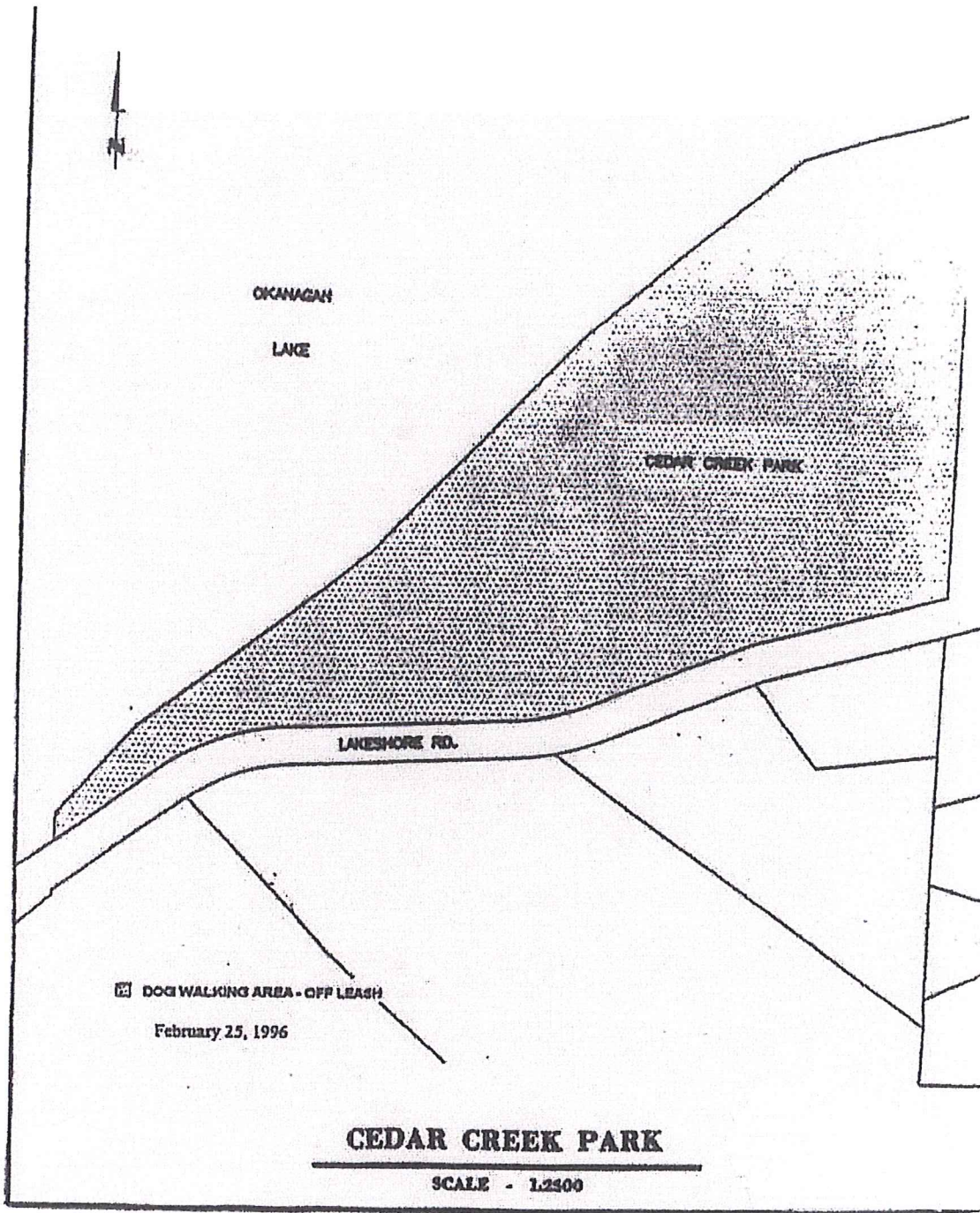
SCALE - 1:2500

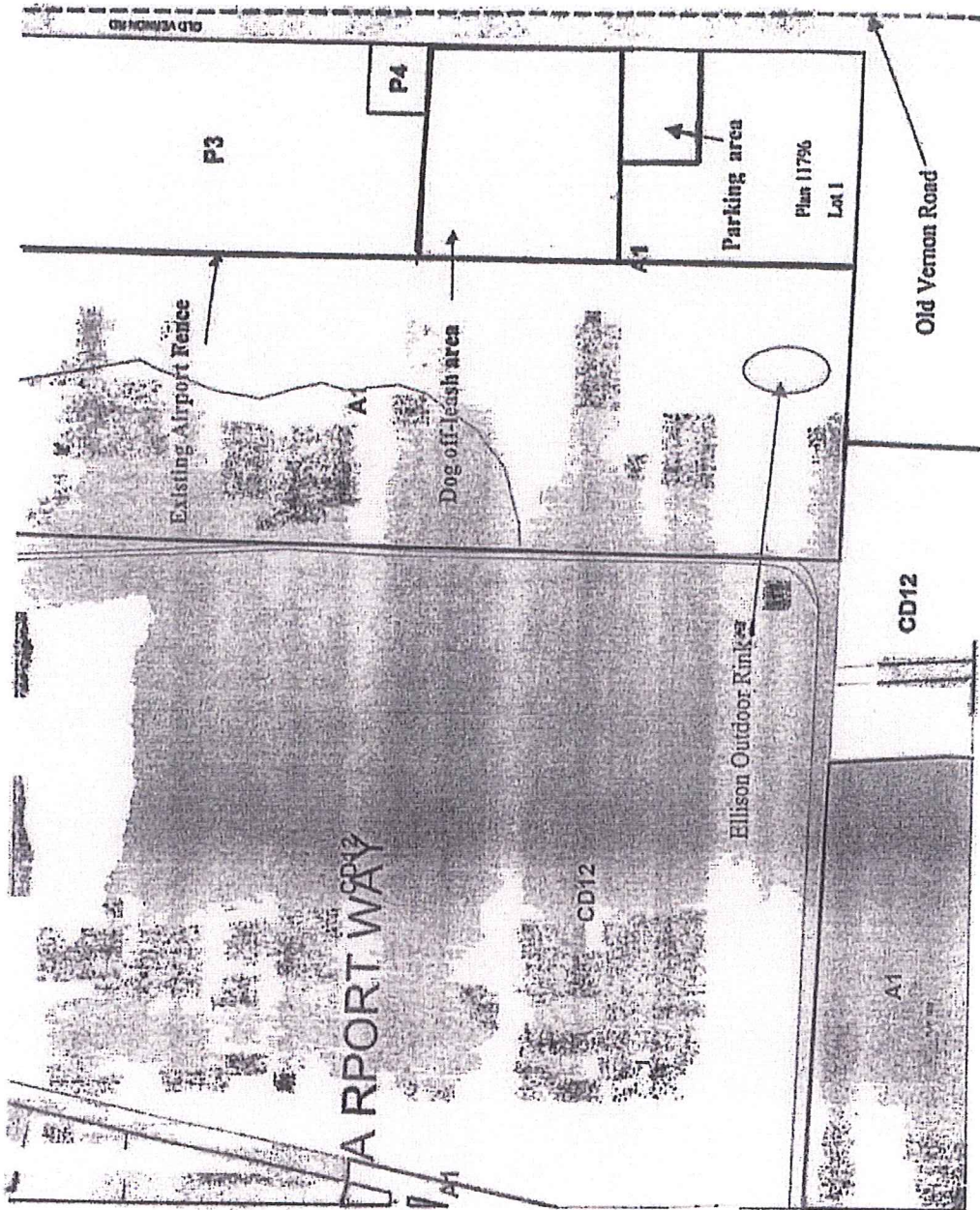




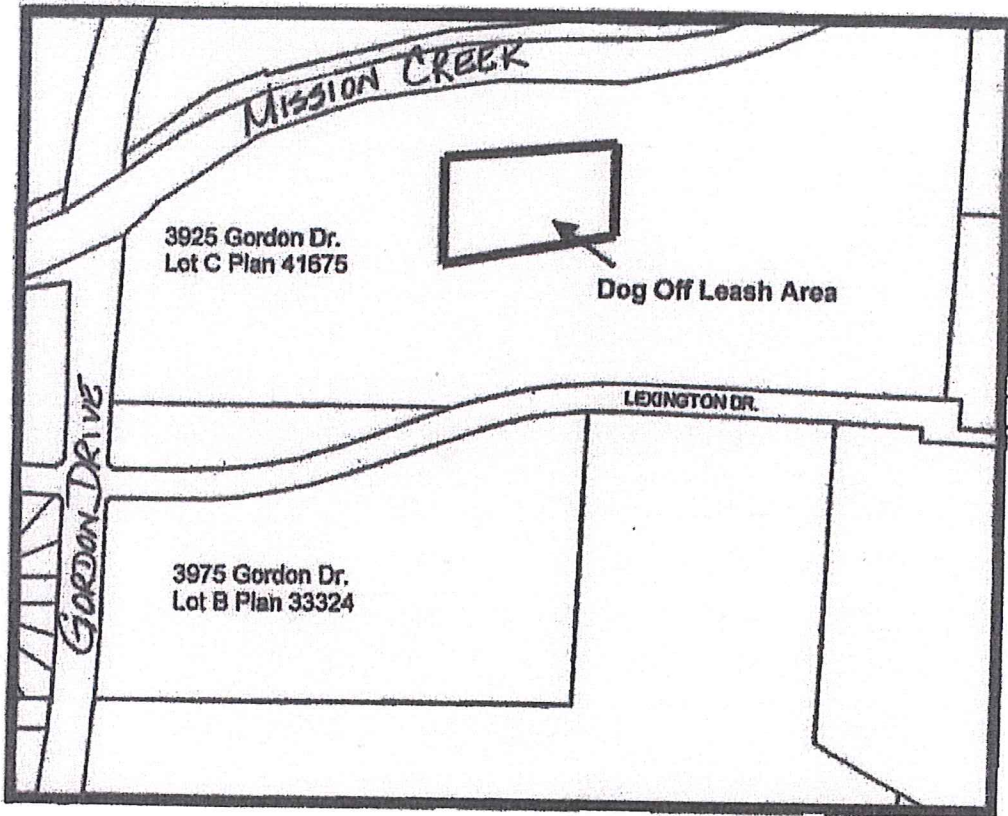
11
12

AREA ACROSS FROM SLEMORE LANDFILL



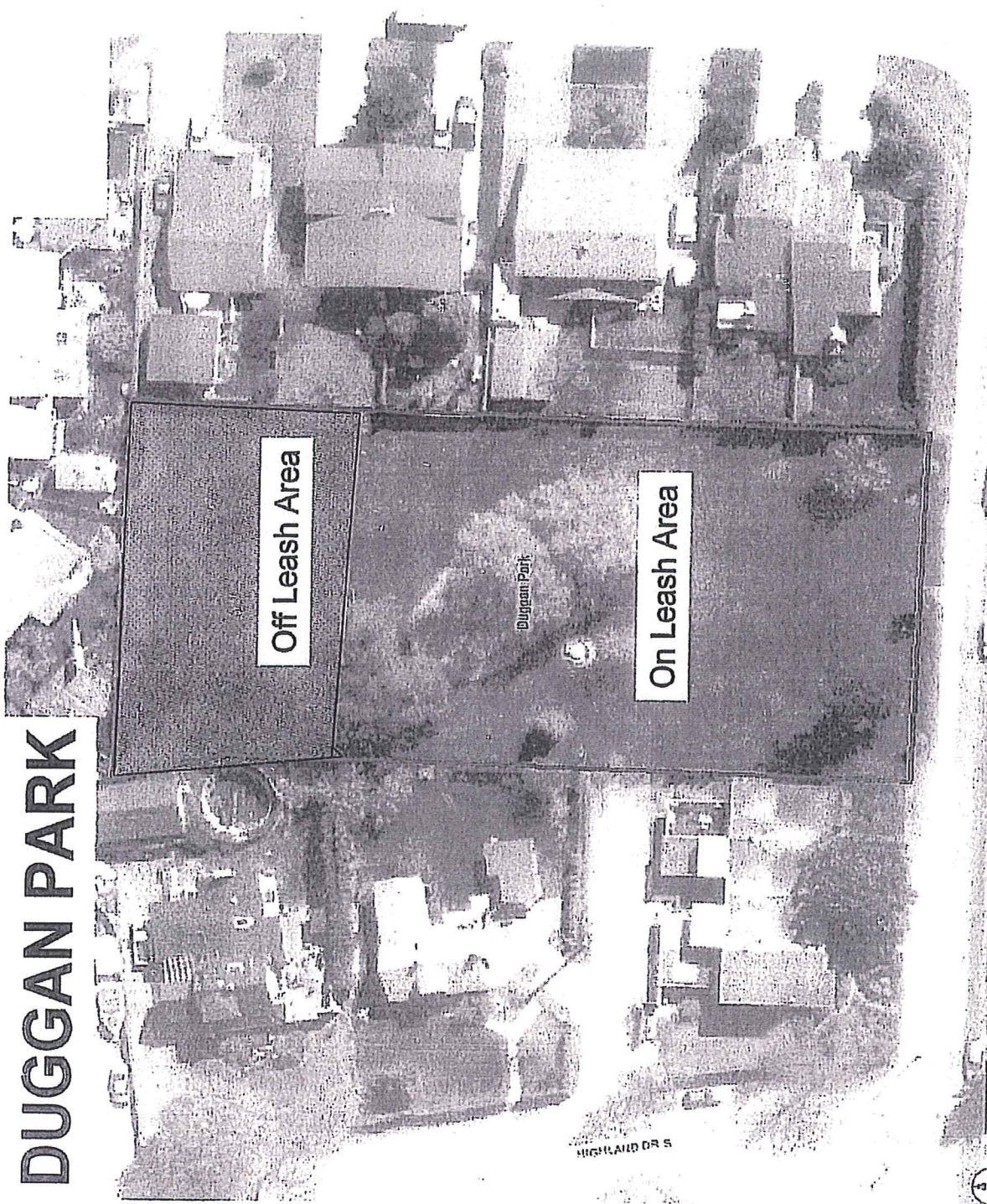


ELLISON FIELDS



MISSION RECREATION PARK

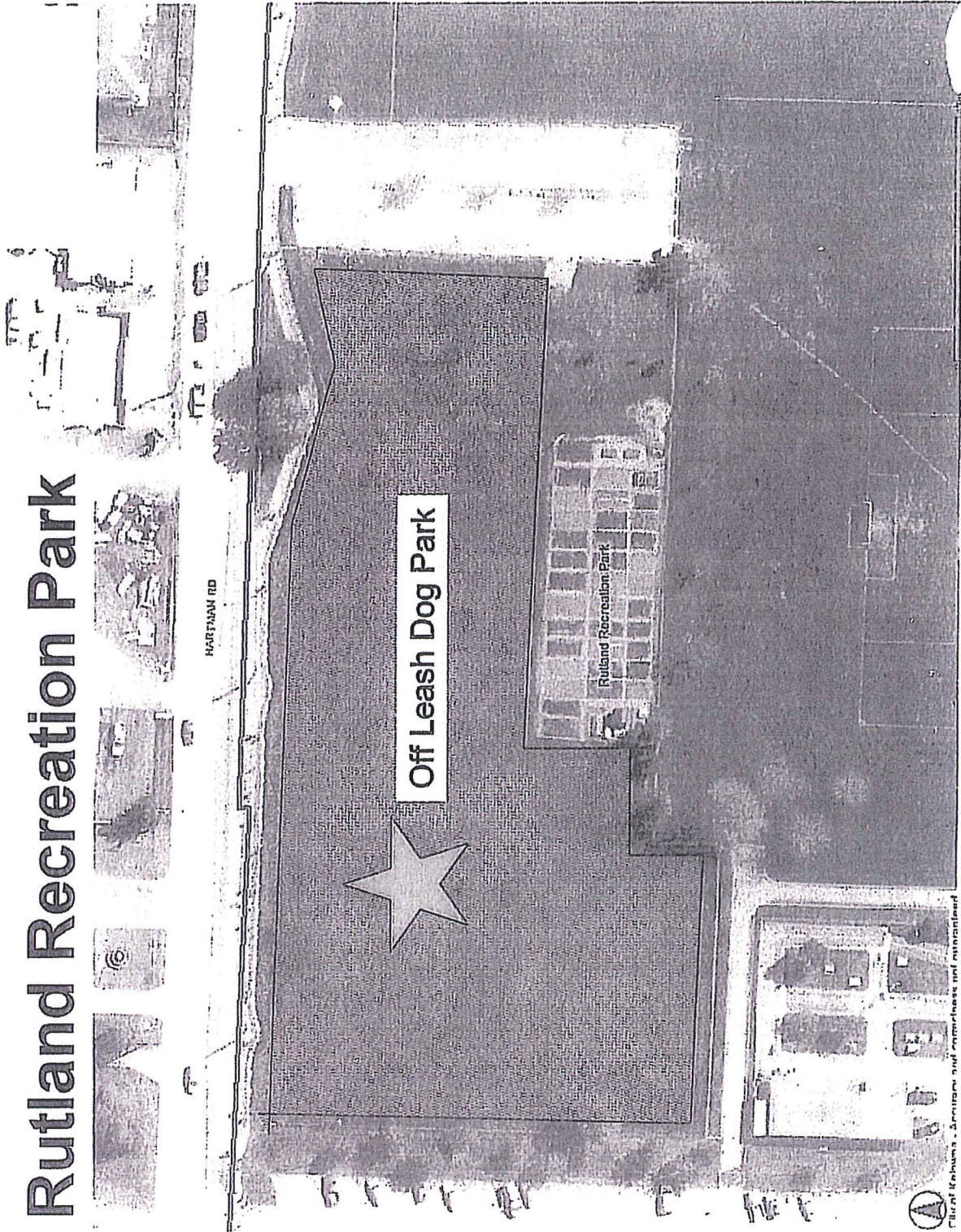






Knox Mountain Park - Off-leash Dog Park

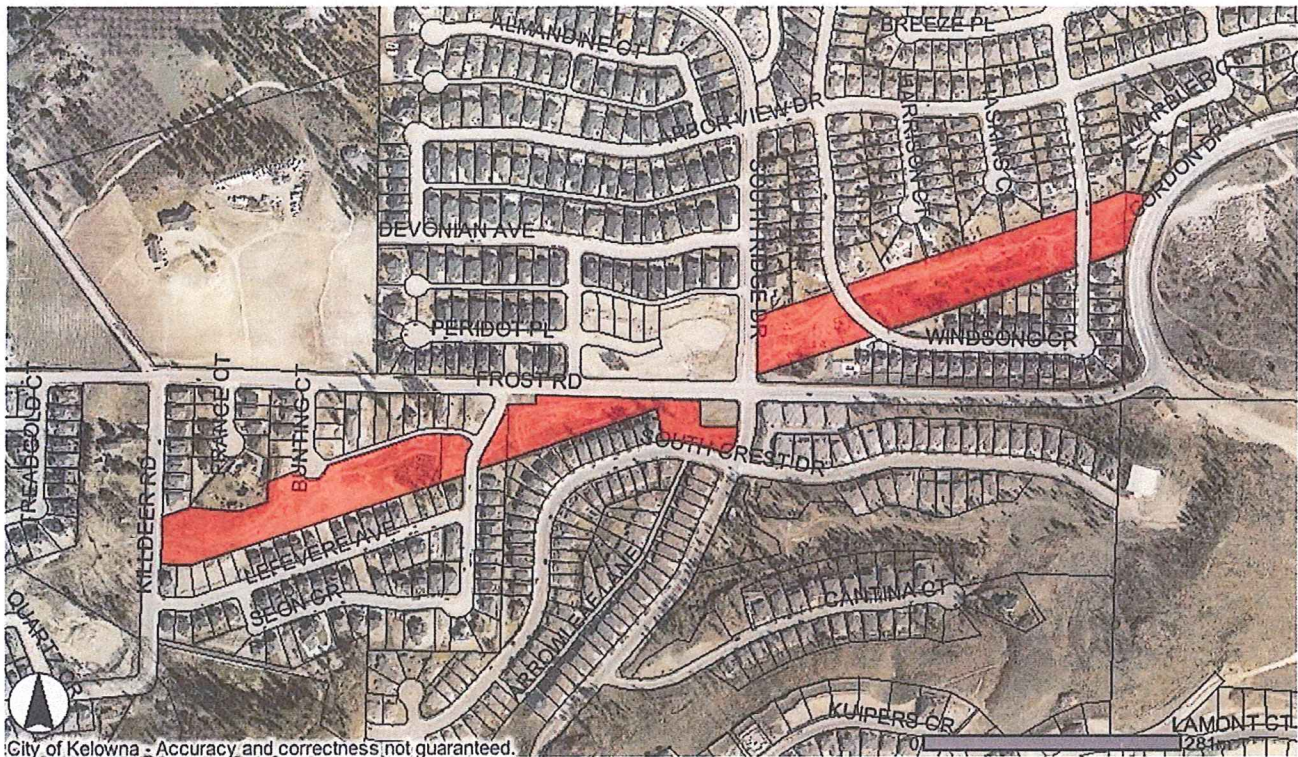
Rutland Recreation Park



City of Kelowna - Services and Amenities and Information
© 2014



Old KSS Site



Southwest Mission Powerline Park



Attachment 1

Knox Mountain Park - Off-leash Dog Park

May 6, 2010



City of Kelowna - Accuracy and correctness not guaranteed.

Attachment 2

Old KSS Site - Temporary Off-leash Dog Park

May 6, 2010